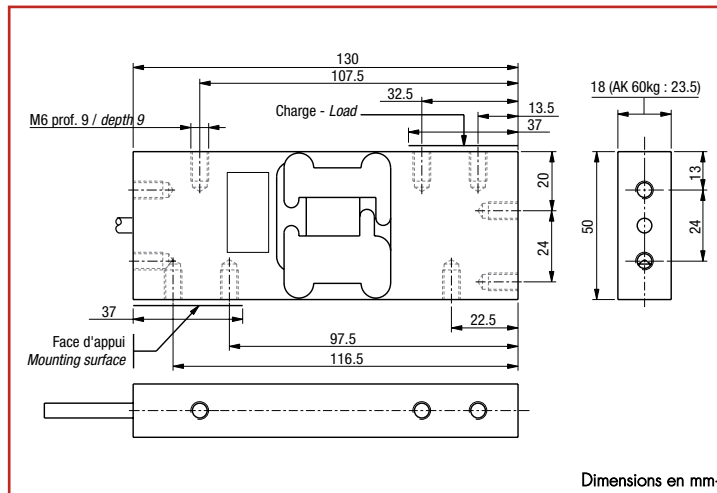
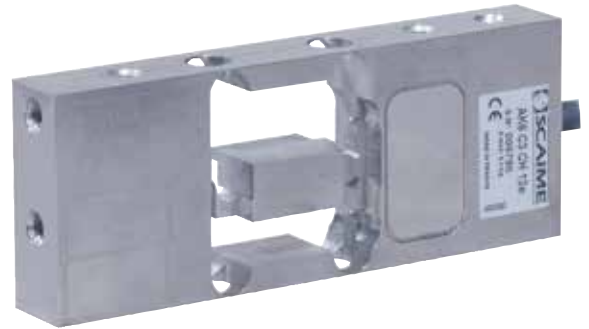


AK 60

6 kg ... 60 kg



- Stainless steel construction, hermetically welded (IP68), suited for use in humid and corrosive environments
- 3 000 d OIML R60 and 5 000 d NTEP approved
- Optimized for dynamic weighing (deflection < 0.25mm)
- Side fixing holes for use in multi-head weighers



Signal at FS: 2 mV/V ±10 %
 Combined error: ±0.017 %FS
 Impedance (in/out): 385 Ω ±20 / 350 Ω ±5
 Compensated temperature range: -10 ... +40°C
 Platform size: up to 420 x 420 mm
 Cable/length: 6 shielded wires / 3 m
 Warranty: 3 years

Excit.: Brown | + Sign.: Yellow | - Sign.: White | - Excit.: Green | + Sense: Grey | - Sense: Pink

Replace: RT HPS

P/N	Designation	FS	v _{min.}	DC
Approved versions OIML C3, Y = 12 000				
403003	LOAD CELL AK6 C3 CH 12e	6 kg	0.5 g	R1
403008	LOAD CELL AK12 C3 CH 12e	12 kg	1 g	R1
403013	LOAD CELL AK30 C3 CH 12e	30 kg	2.5 g	R1
403018	LOAD CELL AK60 C3 CH 12e	60 kg	5 g	R1
Options:				
850272	"SI" TEST FOR LOAD CELLS ATEX & IECEx - II 1 G/D, Ex ia IIC T6 Ga, Ex ia IIIC T80°C Da, IP6X, -20°C < Ta < +60°C (zone 0/20)			R2
850273	"n" TEST FOR LOAD CELLS ATEX & IECEx - II 3 G, Ex nA IIC T6 Gc, -20°C < Ta < +60°C (zone 2)			R2
850274	"DUST" MARKING FOR LOAD CELL ATEX & IECEx - II 1 D, Ex ta IIIC T125°C Da, IP6X, -20°C < Ta < +60°C (zones 20)			R2
850278	FACTORY MUTUAL MARKING FOR SCAIME LOAD CELLS IN HAZARDOUS AREAS			R2
	"GOST-Ex" TEST & MARKING FOR SCAIME LOAD CELLS IN HAZARDOUS AREAS: Consult us			